

Crest Nelskamp Vertical Cladding/Mansard Info



As well as creating outstanding roofscapes, Crest Nelskamp roofing tiles can also be used for facades/walling or as often known as 'vertical cladding'. For technical clarification, BS 5534: the British Standard Code of practice for pitched roofs and vertical cladding, defines a wall as any surface at a pitch of 75 degrees or greater from the horizontal.

Vertical membrane tips

If you're tiling both the roof and the walls, to make it simpler, you could use the same membrane. However, not all roofing underlays will be suitable, so check the product has BBA Certification for use in timber frame walls, or contact the manufacturer if in doubt.

Make sure you install the battens, underlay and tiles in accordance with the recommendations given in NHBC Standards, Chapter 6.2 External timber framed walls, where appropriate. This states that breather membranes must be vapour resistant to less than 0.6MNs/g, capable of resisting water penetration, durable and adequately strong. It also gives clear guidance on construction and fixings standards.

To meet these fixings standards, make sure you secure the underlay at regular intervals, not exceeding 500mm, with austenitic stainless-steel staples or nails to prevent damage by wind action.

Upper layers should overlap lower layers to shed water away from the sheathing. Stagger vertical laps wherever possible.

Horizontal laps should not be more than 100mm and vertical laps not more than 150mm.

Mark the positions of the studs on the face of the breather membranes, preferably by tape, to enable fixing of wall ties and battens – this is essential. Ensure that you protect the lowest timbers in the wall with the breather membrane.

Counter Batten

To use tiles for vertical cladding it is necessary to counter batten and every tile has to be clipped with a 409 clip and a screw with washer in the top interlock of the tile as well.

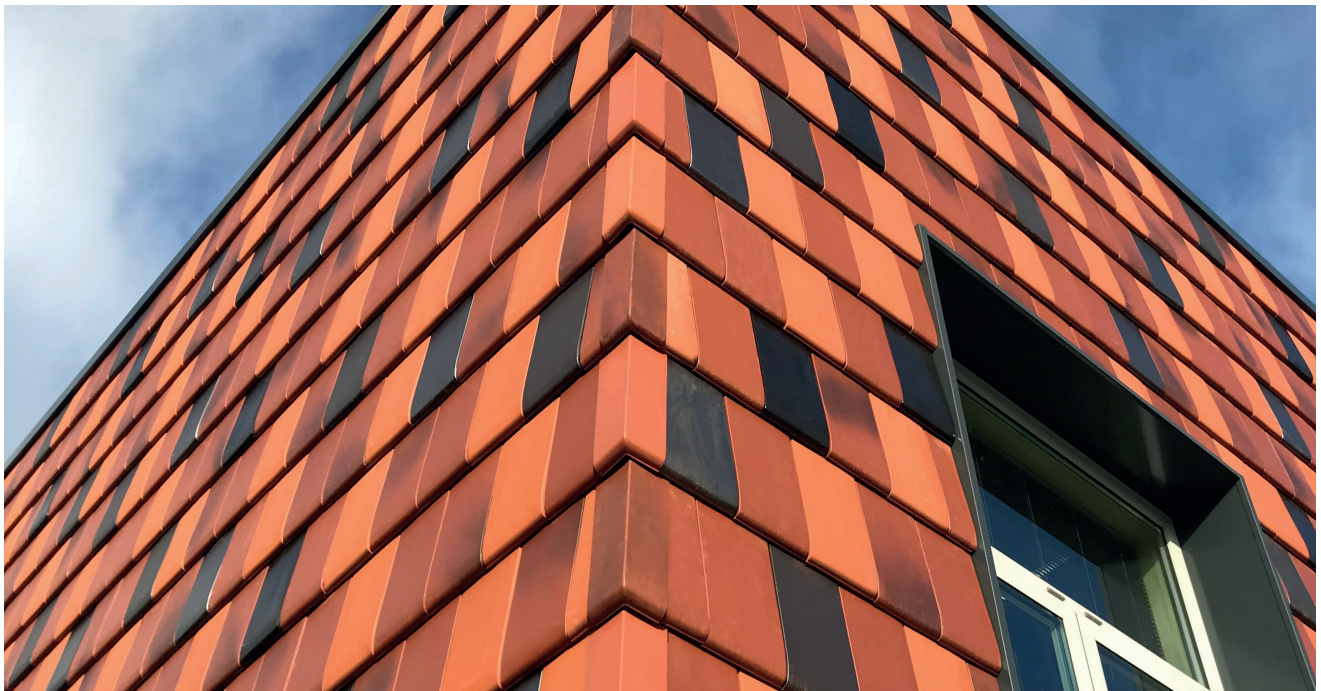
The roof must be counter-battened, using graded tiling and counter battens in accordance with BS 5534. Fix the tiling battens (25x50mm) at the roof tile gauge. This will create a 50mm airspace between the underside of the roof tile and the top of the membrane. We also recommend fixing nail tape onto the counterbattens and other fixing points.

Take care of the ventilation; let the air in at the eave, you need 90 cm² per meter and when the cladding meets the roof, use ventilation tiles in the row above a mansardtile. At least one per meter width, depending on the length of the roof.

Crest Nelskamp Vertical Cladding/Mansard In-works Images



The Vertical Cladding/Mansard must be counter-battened, using graded tiling and counter battens in accordance with BS 5534.



G10 Flat Clay Tile: Vertical Cladding/Mansard finished in a selection of colours which creates a stunning effect.

We have several clay and concrete tiles that can be used for 'vertical cladding'. To find out how we can assist you, please do get in touch with us. You can call us on 01430 432667 or drop us an email to info@crest-bst.co.uk